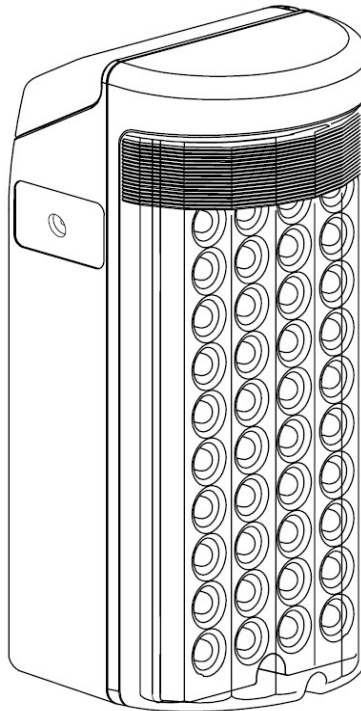




**RECHARGEABLE
LED LANTERN**
INSTRUCTION MANUAL
MODEL: DL-713LS



Introduction

Thank you for your purchase. **GAMA SONIC®** solar charged accent lighting eliminates the problems associated with most solar lighting available today. **GAMA SONIC®** solar charged lights are brighter and last all night with a typical solar charge. Unique design, superior light output and numerous installation options confirm the outstanding value of our product.

GAMA SONIC® has been recognized as a worldwide leader in the lighting industry for over 20 years. The company also offers unique multi-purpose rechargeable products that range from party lights to emergency lighting products.

For technical assistance and more information call our Toll Free number:

1-800-835-4113 (only within the US) or visit our website at: www.gamasonic.com.

Please read the instruction manual carefully to obtain the best results from your purchase.

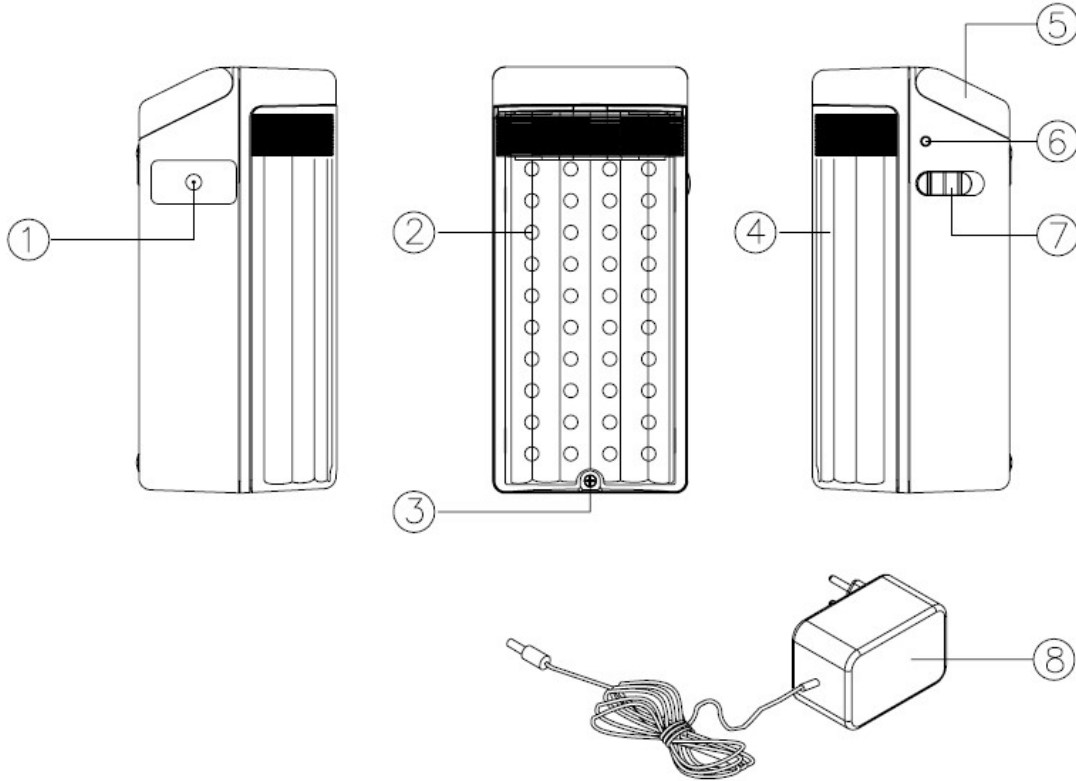
Visit our website or download the latest version of your instruction manual:

www.gamasonic.com or www.gamasonic.com/user-guides

Features:

1. DC Jack
2. Super Bright SMD LED's
3. Lamp Cover Release Screw
4. Lamp Cover

5. Handle
6. Charging Indicator
7. High/Off/Low Switch
8. AC Adaptor



INDOOR USE ONLY

The appliance is not intended for use by young children or infirm persons without supervision.
Young children should be supervised to ensure that they do not play with the appliance.



The lightning flash with arrowhead symbol, within an equilateral triangle, is intended to alert the user to the presence of uninsulated. "DANGEROUS VOLTAGE" within the product's enclosure that may be of sufficient magnitude to constitute a risk of electric shock to persons.



The exclamation point within an equilateral triangle is intended to alert the user to the presence of important operating and maintenance (servicing) instructions in the literature accompanying the appliance.

WARNING: TO REDUCE THE RISK OF FIRE OR ELECTRIC SHOCK, DO NOT EXPOSE THIS APPLIANCE TO RAIN OR MOISTURE.

HOW TO OPERATE THE LANTERN FOR AUTO LIGHT UP FUNCTION:

1. Please plug the AC Adaptor into AC power supply (wall socket) then start for operation.
2. Push the ON/OFF switch (No.7) to "ON" position. The LEDs will light up immediately when AC power fails. Push to "OFF" position to stop auto light up function.

HOW TO OPERATE THE UNIT

Push the ON/OFF switch (No.7) to "ON" position, the LEDs will light up immediately. Push to "OFF" position to end the operation.

HOW TO RECHARGE THE UNIT

NOTE: Before recharging, please make sure the ON/OFF switch (No.7) must be in "OFF" position.

1. Plug the AC Adaptor to AC power source and connect DC plug into the unit.
2. The Charging Indicator (No.6) will light up indicating the lead-acid battery is under charging.

IMPORTANT NOTE

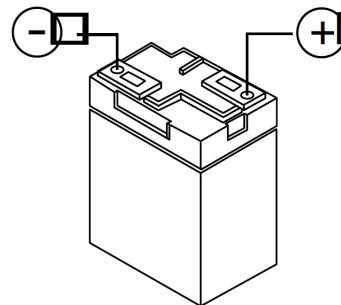
1. Please read the Instruction Manual carefully before operating the unit.
2. Make sure the electric rating of your home power supply before plugging into AC power source.
3. Keep recharging the lead-acid battery immediately after using the lantern.
4. Make sure the ON/OFF switch (No. 7) must be at "OFF" position when not in use.
5. The efficiency may decrease:
 - a. When the lead-acid battery is used to end without recharging.
 - b. When the lead-acid battery is charged at the temperature below 32°F (0°C) or above 104°F (40°C).
6. Please keep out of reach of water or rain for proper use.
7. After charging, unplug the AC power cord from power source.
8. Keep recharging the lead-acid battery every three months if you are not using the lantern. Otherwise the lead-acid battery may be damaged.
9. Switch off all functions when you are charging the lead-acid battery. Otherwise you will get lower efficiency of charging.
10. During operation, when the light goes dim or the lead-acid battery turns into discharge protection, charge the lead-acid battery immediately. Otherwise, the lead-acid battery may be damaged.

WARNING FOR THE RECHARGEABLE LEAD- ACID BATTERY.

1. The Rechargeable Lantern is only applicable for charging the sealed Lead-Acid battery. Do not charge with different types or non-rechargeable batteries.
2. During using or recharging the lead acid battery, the appliance must be placed in a well ventilated area.
3. The orientation of the lead-acid battery with regard to polarity battery contact (+) & (-). Do not short circuit or put into fire, avoid reverse charging.
4. Regarding safe disposal of used lead-acid batteries, insert the batteries into battery charger according to the lead-acid battery for 20 hours every time to achieve full charge condition.
5. Leaking lead-acid battery must be removed from the appliance carefully. The lead-acid battery must be recycled or disposed of properly.
6. The lead-acid battery must be removed from the appliance before it is scrapped.
7. The lead-acid battery is to be disposed of safely by putting into battery compartment with cover.
8. The appliance must be disconnected from power supply before removing the battery.

Technical Specifications

Operating Temperature.....	0°C to 40°C
Humidity.....	lower than 90%
Charging Time.....	20Hours
Battery Spec.....	4V/3AH Lead Acid
LED Spec.....	Super Bright LED x 40 PCS
Duration of Battery LED.....	7 Hours
Accessories Provided.....	AC Adaptor
Input Voltage.....	AC120V / 60Hz
Output Voltage.....	DC6V / 300mA



MAINTENANCE

Use only small cotton swab with cleaning alcohol to clean the lantern.

CAUTION: Never use strong or volatile chemicals to clean the lantern as it may damage the plastic parts. Keep out of reach of children.

WARNING: To avoid electric shock, please do not open the lantern for repair or cleaning unless by qualified person.

